



Scanify

Cards Device

ALL IN ONE SCANING SOLUTION

Device for extracting data from cards and official documents like (National ID, Driver's license, Credit and Debit, Syndicate cards and more) via **Artificial Intelligence**

DEVICE APPLICATIONS



Guest check-in for hotels



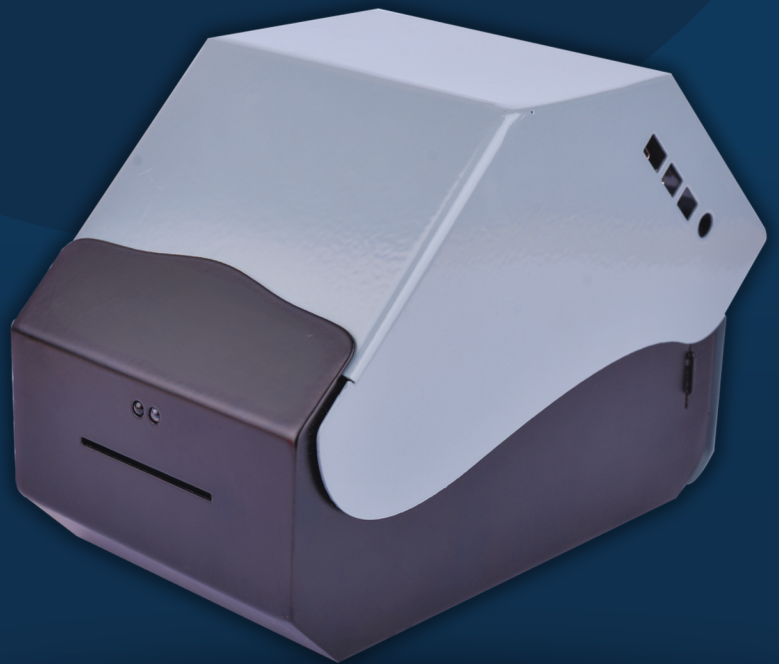
Visitor registration for institutions and compounds



Management of entry for conferences and events



Integration with other systems



24 Hammouda mahmoud st.Nasr City,
Cairo, Egypt 11765

+201011133990 / +20222727771
sales@smartronics.com.eg
www.smartronics.com.eg

Scanify

Cards Device

DEVICE FEATURES



Computer + Scanner in One Device

We have integrated a complete computer with a scanner into a single, cost-effective, compact device.



Dual-Sided Scanning of Cards in One Process

We have developed a mechanism for scanning both sides of cards in one process to speed up operations and save time.



Data Extraction Using Artificial Intelligence

We extract the data printed on both sides of the cards in a textual format for various uses.



Storing Data in Various Ways

The device Stores the data extracted either in its internal memory or on a server via the network, or it can be used to fill in fields for a program or directly print on paper forms.



Saving Data in Multiple Formats

The device compiles the data after formatting it according to the client's preferences and saves it in multiple formats such as (PDF, Word, Excel and more).

SPECIFICATION



PROCESSOR

Quad-Core 64-bit Arm
Cortex A76



WIFI

Dual-band 802.11ac



ETHERNET

Gigabit Ethernet, with
PoE+ support



RAM

LPDDR4X-4267 SDRAM



BLUETOOTH

5.0 / Bluetooth Low Energy
(BLE)



USB

2×USB 3.0 and 2×USB 2.0
ports

